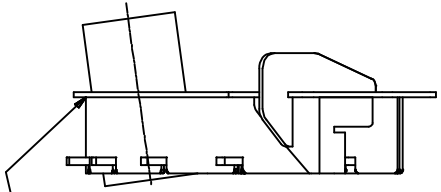
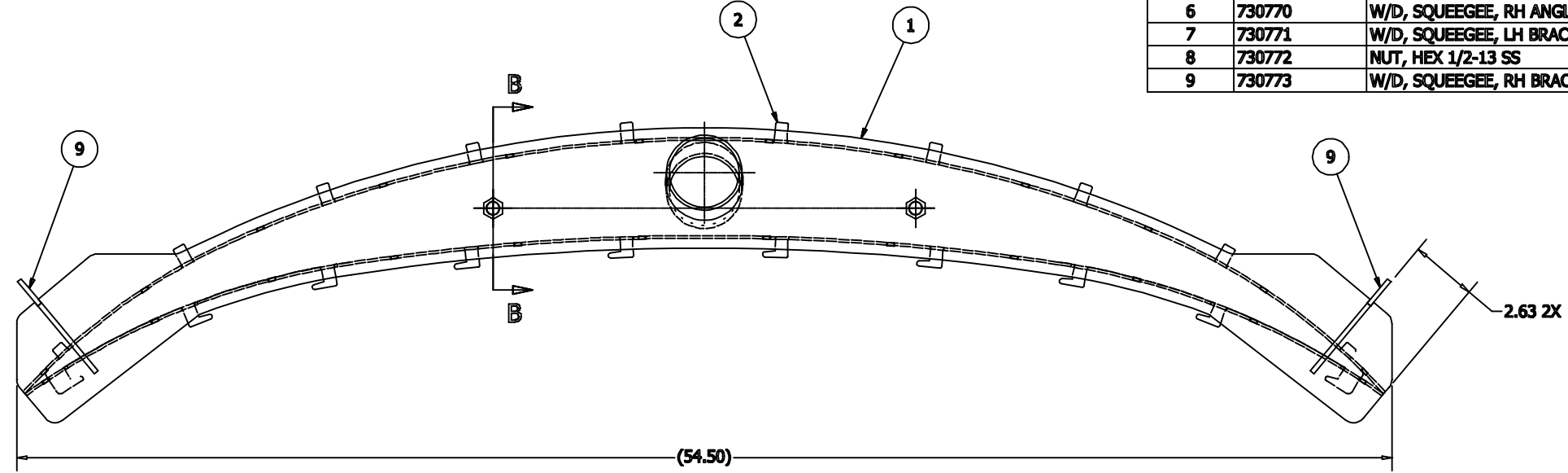
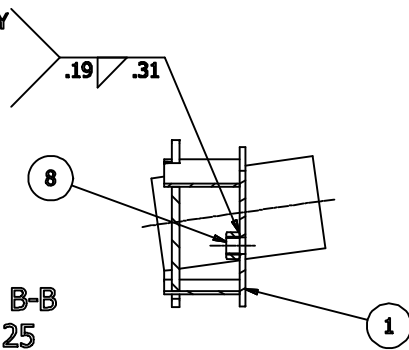


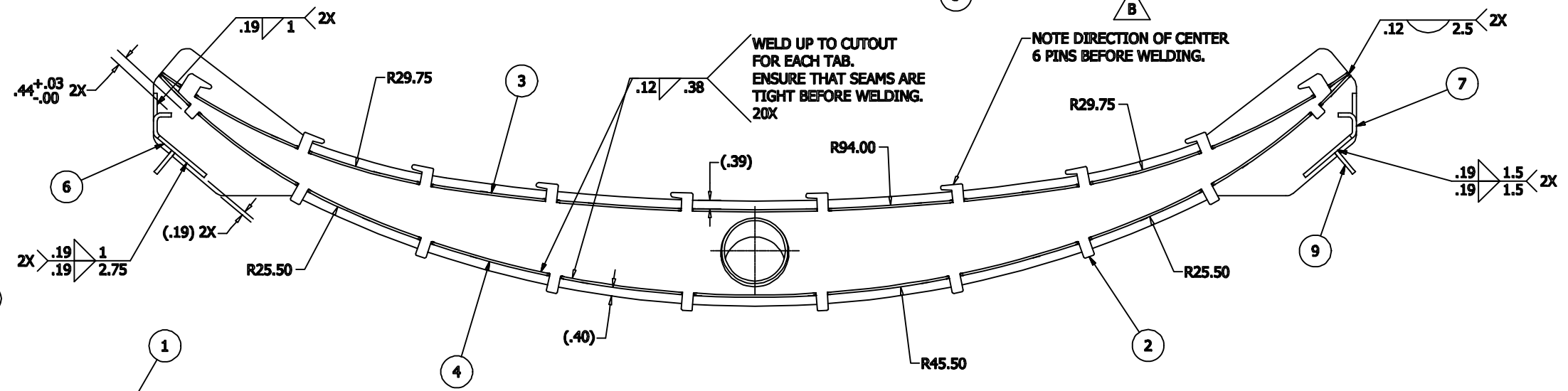
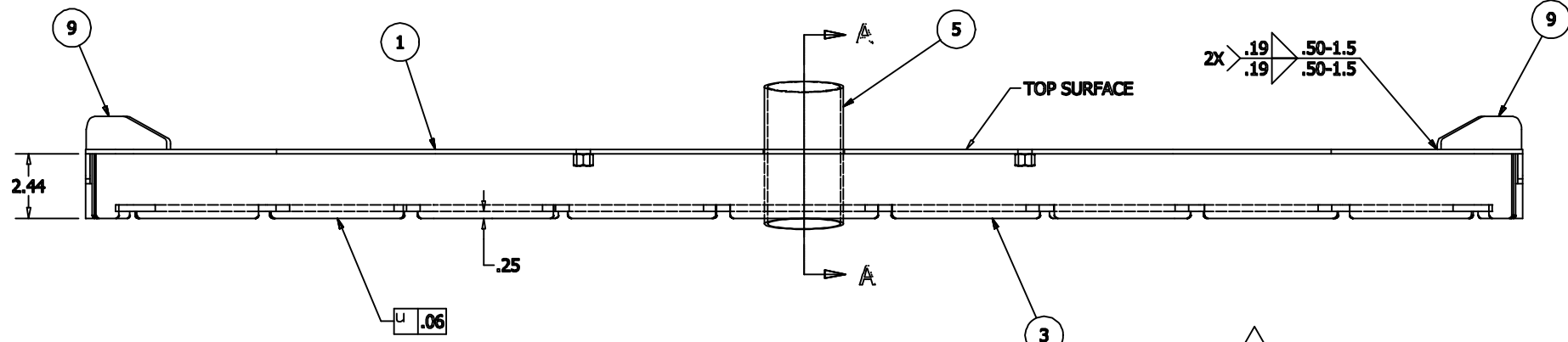
REV	ECN #	DATE	DESCRIPTION OF CHANGE-IS (WAS)	BY:
X		8-10-2012	RELEASED FOR PRODUCTION	CMK
A	MIN-12257	8-12-2013	ADDED WELD/GRIND NOTE	CMK
B	MIN-12813	12-5-2014	SHOWING CHANGE TO ITEM 2 / ADDED NOTE	CMK

PARTS LIST			
ITEM	PART NUMBER	DESCRIPTION	QTY
1	730765	W/D, SQUEEGEE, TOP PLT	1
2	730766	W/D, SQUEEGEE, PIN PLT	1
3	730767	W/D, SQUEEGEE, FRONT BAR	1
4	730768	W/D, SQUEEGEE, REAR BAR	1
5	730769	W/D, SQUEEGEE, TUBE	1
6	730770	W/D, SQUEEGEE, RH ANGLE	1
7	730771	W/D, SQUEEGEE, LH BRACE	1
8	730772	NUT, HEX 1/2-13 SS	2
9	730773	W/D, SQUEEGEE, RH BRACE	2

2-WELDS EQUALLY SPACED AT 180-DEGREES 2X

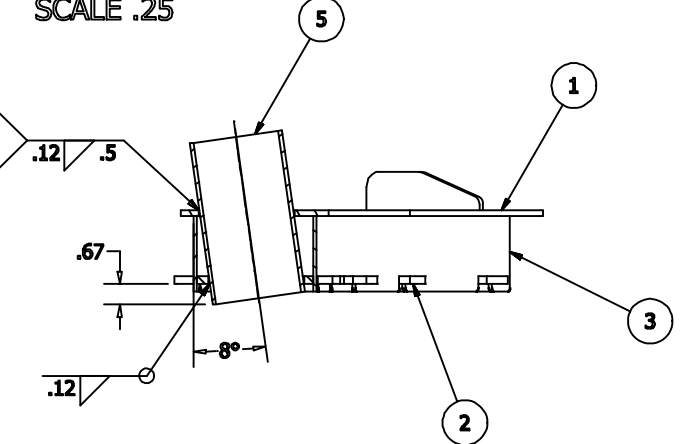


10-WELDS, ONE LOCATED ABOVE EACH FINGER. ENSURE THAT SEAMS ARE TIGHT BEFORE WELDING. 2X

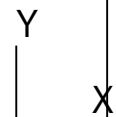


SECTION A-A SCALE .25

4-WELDS EQUALLY SPACED AT 90 DEGREES



NOTE: DO NOT WELD OR GRIND ON THE TOP SURFACE. NOTE ORIENTATION OF PIN POINTS BEFORE WELDING.



<p>CONFIDENTIAL</p> <p>THIS DRAWING AND ALL INFORMATION CONTAINED THEREIN ARE THE EXCLUSIVE PROPERTY OF MINUTEMAN INTERNATIONAL, INC. THIS DRAWING IS NOT TO BE COPIED OR OTHERWISE REPRODUCED WITHOUT EXPRESSED WRITTEN PERMISSION OF MINUTEMAN INTERNATIONAL, INC. IN ADDITION, THIS DRAWING MUST BE RETURNED UPON REQUEST. FURTHER, ALL INFORMATION CONTAINED HEREIN MUST BE MAINTAINED CONFIDENTIAL.</p>	SOURCE:				175 Anderson Street Aberdeen, NC 28315 PHONE (910) 944-2105 FAX (910) 944-7409	
	PN. MATL:		CAD BY: KNOWLTON		DATE: 8-10-2012	
	FINISH: NONE		UNSPECIFIED TOLERANCES		DESCRIPTION WELDMENT, SQUEEGEE	
	X .1 .0X .03 .00X .010		ANGULAR: X .1~ .X .5~		PART NO. 730764	
DES. ENG: KNOWLTON		ENG. REL:		REV LEV B		SHT NO. 1